

SUBWOOFERS

POWERPIPE SUBWOOFERS



POWERPIPE SUBWOOFERS

The custom electronics industry has taken note of the vast possibilities our PowerPipe subwoofers can offer. The choices are endless and the quality is second to none. You simply cannot get a better sounding subwoofer anywhere, or be able to hide it the way we can. All models are 70V and marine grade in any color. They come with a standard aluminum 2.75" x 14.125" grille.

- Aircraft Grade Aluminum Woofer
- Various Toekick Solutions to Complement Any Design
- Custom Drivers



Hide the PoperPipe subwoofer into any surface or cabinet. Select from a variety of trimkits or work with the James Loudspeaker team to customize one to suit your project. The result is powerful bass performance with a clean aesthetic finish.



PP6-M



6.5" SUBWOOFER, 48" HOSE
Dimensions (HxWxD): 9.6" x 9" x 15.4"
(244mm x 229mm x 391mm)

PP8-M



8" SUBWOOFER, 36" HOSE
Dimensions (HxWxD): 11.6" x 10" x 16.6"
(295mm x 254mm x 422mm)

PP10 | PP10-M



PP10: 10" SUBWOOFER, 28" HOSE
Dimensions (HxWxD): 12.62" x 12" x 11.5"
(321mm x 305mm x 292mm)

PP10-M: 10" SUBWOOFER, 28" HOSE
Dimensions (HxWxD): 11.8" x 12.5" x 14"
(300mm x 318mm x 356mm)

PP12 | PP12-M



PP12: 12" SUBWOOFER, 28" HOSE
Dimensions (HxWxD): 15.5" x 14.9" x 15.4"
(394mm x 378mm x 391mm)

PP12-M: 12" SUBWOOFER, 28" HOSE
Dimensions (HxWxD): 14.1" x 13.5" x 15"
(366mm x 343mm x 381mm)

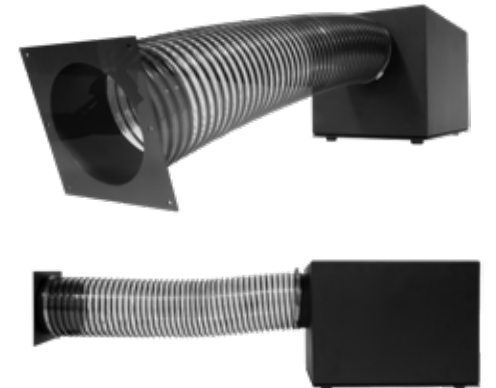
PP12-2 | PP12-2-M



PP12-2: 12" SUBWOOFER, 48" HOSE
Dimensions (HxWxD): 15.5" x 14.9" x 15.4"
(394mm x 378mm x 391mm)

PP12-2-M: 12" SUBWOOFER, 48" HOSE
Dimensions (HxWxD): 14.1" x 13.5" x 15"
(366mm x 343mm x 381mm)

PP15-M



15" SUBWOOFER, 36" HOSE
Dimensions (HxWxD): 17.1" x 16.5" x 24"
(434mm x 419mm x 610mm)

POWERPIPE ACCESSORIES

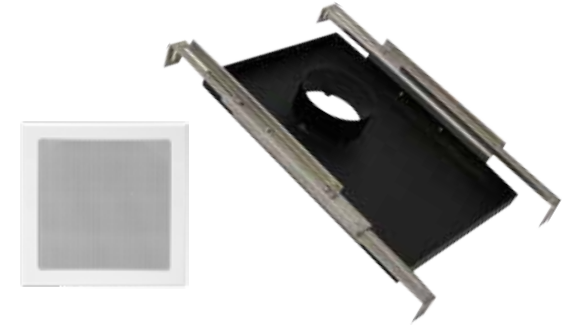


STANDARD TOE KICK



TK4-3x14-2 | TK4-3x14-6 | TK4-3x14-8
4" Standard Toekick

SMALL APERTURE ADAPTER



TK4-PP-SA
4" Ceiling PowerPipe Port



STRAIGHT BACK TOE KICKS



TK4S-3x14-6
4" Racetrack PowerPipe Port

POWERPIPE CUSTOM TOEKICK



PP CUSTOM WOOD TOEKICK
Custom Designed



TK4S-3x14
6" x 14" HVAC Vent Design



PP CUSTOM TOEKICK
Custom Designed

EMB SERIES



HIGH-POWER HANDLING

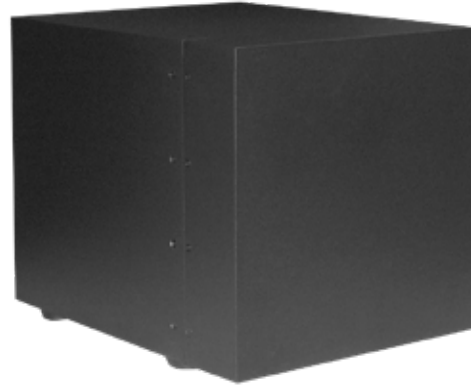
EMB Series II Subwoofers are a passive design engineered for high-power handling. We recommend powering EMB Series II subwoofers with the James Loudspeaker M1000 class D amplifier for 1000 watts of clean power and full DSP digital processing.

CABINET SUBWOOFER



EMB Series II Subwoofers are a passive design engineered for high-power handling. The cabinet is available in four sizes and can be oriented for front-firing or down-firing. Each cabinet is constructed from solid aluminum for luxuriously sleek and powerful bass. The result is lower distortion, smoother frequency response, and greater bass extension.

BANDPASS SUBWOOFER



EMB Series II Bandpass subwoofers leverage “Energy Multiplying Bandpass” technology to obtain high output and low distortion from a very compact enclosure. The bandpass models feature a front “Acoustic Energy Director,” which allows stealthy in-cabinet installation, porting through a James Loudspeaker toekick or cabinet side.

DF-10 SUBWOOFER



The DF-10 Subwoofer is designed for installations under furniture or on the wall. The ultra slim 4” tall cabinet is down-firing and constructed of 5052 marine grade aluminum for indoor or marine applications.



ENERGY MULTIPLYING BANDPASS

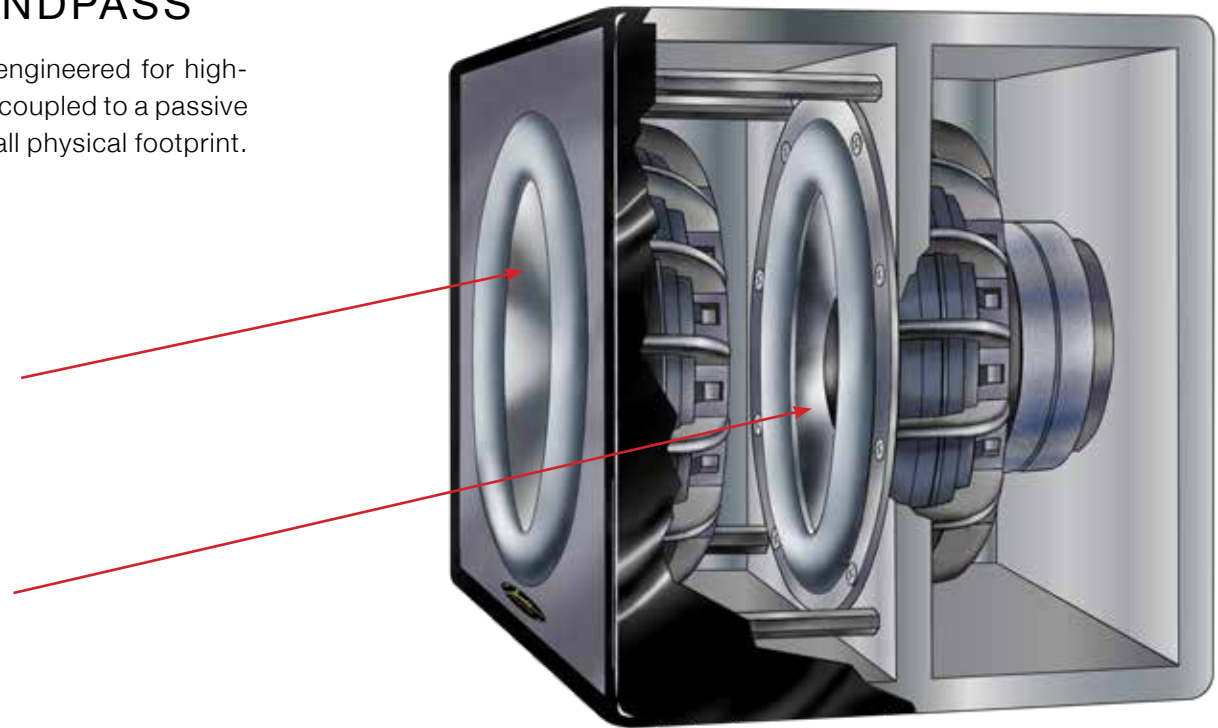
EMB Series II Subwoofers are a passive design engineered for high-power handling. The active driver is pneumatically coupled to a passive radiator for 2x the power from an impressively small physical footprint.

PASSIVE RADIATOR

Pneumatically phase-coupled passive radiator delivers high-impact bass with ultra-low distortion.

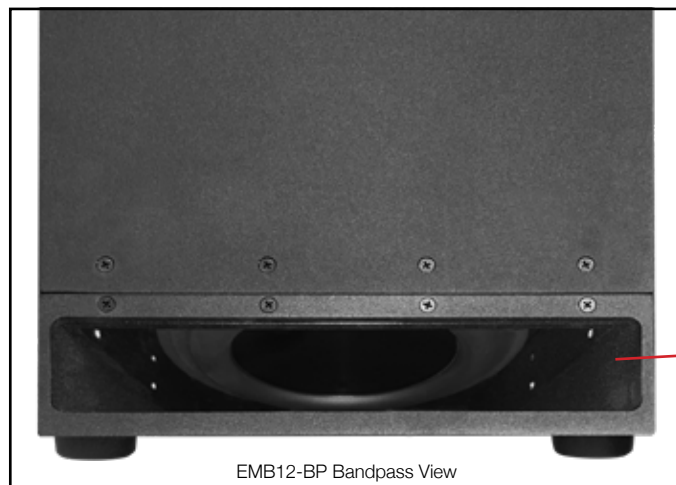
ACTIVE DRIVER

Specialty designed aluminum woofer moves air within the sealed portion of the aluminum enclosure to engage the Passive Radiator.



EMB BANDPASS

Tuck EMB Bandpass subwoofers into cabinets and port them through a toekick for a beautiful finish without compromise to bass performance.



CABINET SUBWOOFERS



EMB15-DF

15" SUBWOOFER

Dimensions (HxWxD): 16" x 16.25" x 16.25"
(406mm x 413mm x 413mm)



EMB12-DF

12" SUBWOOFER

Dimensions (HxWxD): 15" x 14" x 14"
(381mm x 356mm x 356mm)



EMB10-DF

10" SUBWOOFER

Dimensions (HxWxD): 13" x 12" x 12"
(330mm x 305mm x 305mm)



EMB8-DF

8" SUBWOOFER

Dimensions (HxWxD): 11.25" x 9.75" x 9.75"
(286mm x 248mm x 248mm)

BANDPASS SUBWOOFERS



EMB12-BP Bandpass View
with "Acoustic Energy Director"



EMB12-BP ("Acoustic Energy
Director" Removed)

12" SUBWOOFER

Dimensions (HxWxD): 13.5" x 13.5" x 17.6"
(343mm x 343mm x 447mm)



EMB10-BP ("Acoustic Energy
Director" Removed)

10" SUBWOOFER

Dimensions (HxWxD): 11.5" x 11.5" x 15.6"
(292mm x 292mm x 396mm)

DF-10 SUBWOOFER



DF-10 SUBWOOFER

Dimensions (HxWxD): 3.875" x 16" x 16"
(98mm x 406mm x 406mm)

IN-WALL | IN-CEILING SUBS



IN-WALL SUBWOOFERS



QX1010

10" IN-WALL SUBWOOFER

Dimensions (HxWxD): 20.32" x 14.32" x 3.88"
(516mm x 364mm x 99mm)



QX1020

10" ACTIVE/PASSIVE IN-WALL SUBWOOFER

Dimensions (HxWxD): 28.46" x 14.32" x 3.88"
(723mm x 364mm x 99mm)



QX1020A

10" DUAL ACTIVE IN-WALL SUBWOOFER

Dimensions (HxWxD): 28.46" x 14.32" x 3.88"
(723mm x 364mm x 99mm)

POWERFUL, UNOBTRUSIVE BASS

These unique subs are designed to offer smooth, deep bass to complement any audio system while maintaining a discreet, space-saving design. Placement is flexible, hidden out of sight behind displays or tucked up into the ceiling. James Loudspeaker QX in-wall and in-ceiling subwoofers are built to match other QX series models and deliver powerful, visually unobtrusive bass.

IN-CEILING SUBWOOFERS



QX8S-R/S

8" IN-CEILING SUBWOOFER

Dimensions (DIAxD): 10.84" x 7.14"
(275mm x 181mm)



QX10S-R/S

10" IN-CEILING WOOFER

Dimensions (DIAxD): 12.64" x 7.5"
(321mm x 190mm)